

## CONTACT

PHONE NUMBER:

(503)6833 3180

WEBSITE:

[www.greenwallps.com](http://www.greenwallps.com)

EMAIL:

[gwps.marketing@gmail.com](mailto:gwps.marketing@gmail.com)

## GREEN WALL PANEL SYSTEM

High density EPS structural panel

### POLIESTIRENO DE ALTA DENSIDAD

(EPS-HD, expanded polystyrene sheet-high density)

Lightweight continuous closed-cell insulation with many applications in walls, foundations, ceilings, moldings, cladding, restorations, acoustic partitions, etc.

Benefits:

- High resistance to heat transfer (0.036 W/m°C)
- Energy efficiency, between 15 and 30% savings
- High mechanical resistance to shear stresses
- Compressive strength (0.31 Kg/cm<sup>2</sup>, ISO 785)
- Water absorption between 1 and 3% (DIN 53428)
- Acoustic attenuation
- 100% recyclable
- Chemical Resistance

### METAL STUDS AND TRACKS

(Metal Stud y Track)

Component of a complete light-walled system. It is a durable solution that provides many benefits and is widely used in domestic and general commercial projects.

- 0.90 mm (20 Cal.) and 1.20 mm (18 Cal.) structural profiles
- Standard sizes of 8' (2440 mm), 10' (3048 mm), custom sizes are possible upon confirmation



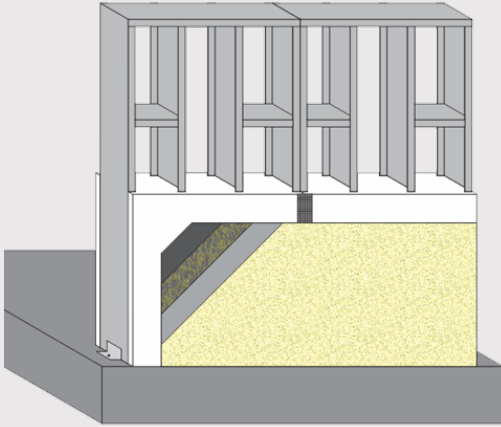


# GREEN WALL PANEL SYSTEM

High density EPS structural panel

## GREEN WALL PANEL

Lightweight continuous insulation composed of EPS-HD and metals, to use in exterior or interior walls, ceilings, acoustic partitions, etc., in which multiple finishes can be applied, from paints, ceramics, EIFS, ceramics, tiles, to stone, façade, wood, etc.




### Benefits:

- Wind pressures of more than 175 mph (282 km/h) for GW8. (test approved 13/09/23 Miami Dade, USA)
- Seismic test: Class C corresponds to soft rock and very rigid/very dense soil, rigid soils class D and E and soft soils. (Draft approved Miami Dade, USA)
- Monolithic panels up to 15 ml
- Sections for doors and windows under standard sizes, custom sizes are possible upon confirmation

**GW8, GW6, GW5 Y GW4**

**TABLE OF PARAMETERS**

Product	Thermal conductivity $\lambda$ (W/m-K)	Compressive strength (kPA)	CO2 production (kgCO2/kg)	Acoustic absorption NCR	STC classification
EPS-HD, expanded polystyrene sheet-high density	0.030-0.040	100-700	About 0.6-2	Low, 0.12 to 1 ½	30 to 45

MATERIAL	Thermal conductivity	Thickness	Compressive strenght
	$\lambda$ (W/mk)	(mm.)	Rt. m <sup>2</sup> .K/W
 Expanded EPS <b>0,036</b>	<b>0,036</b>	30	0,80
		40	1,10
		50	1,35
		60	1,65
		80	2,20

**GREEN WALL PANEL WEIGHT**

Thickness in inches	Weight Kg/m2
4	12
5	14
6	16
8	19

### CONTACT

PHONE NUMBER:  
(503)6833 3180

WEBSITE:  
[www.greenwallps.com](http://www.greenwallps.com)

EMAIL:  
[gwps.marketing@gmail.com](mailto:gwps.marketing@gmail.com)

Green Wall Panel System, faster, lighter, more economical.

